



JEWISH COMMUNITY CENTER of Greater Ann Arbor

Chai Lights

FALL 2013

Intergenerational
Programs



Early Childhood Center



JCC Maccabi Games

Wellness



Jewish Cultural
Arts and Education

BE PART OF OUR
NEIGHBORHOOD

*Learn About Our
Exciting Programs and Events
INSIDE!*

Senior Programs



Family Celebrations

Enrichment Programs



Day Camps



Kids' Club



JEWISH
COMMUNITY CENTER
OF GREATER ANN ARBOR

2935 Birch Hollow Drive • Ann Arbor, MI 48108
(734) 971-0990 • www.jccann Arbor.org

Be a Part of our Neighborhood!

Friday Afternoon Performing Arts Series

Join us at the JCC every Friday at 1 p.m. for a special pre-Shabbat Performing Arts Series. Each week, we will showcase the local musical or theatrical talent of Ann Arbor. From the Ann Arbor Symphony to local theater groups, we know you will enjoy this relaxing entertainment while you enjoy coffee, tea and a variety of desserts.



NEW!

Shabbat Meals to Go

Service begins Friday, October 4
(must order meal by Monday prior)

JCC makes celebrating Shabbat together as a family even easier with “Shabbat Meals to Go.” Contact the front desk by 5 p.m. on Monday, and a complete Shabbat meal prepared by “What’s Cooking” will be ready for pick-up at the JCC on Friday afternoon. Included with the meal will be a fresh Challah and Shabbat candles. All meals will be dairy, however they are not supervised Kosher.

Founded in 2006, What’s Cooking! provides, healthy, delicious fully cooked meals delivered to fresh to the JCC. They use the highest quality ingredients with no high fructose corn syrup or MSG and don’t rely on salt as a seasoning. Each week the menu will include a selection of dairy entrees, vegetables and salads.

COST: \$12.50 per entree. *Serving sizes are generous and can easily feed two children.*

SCHEDULED PERFORMANCES

OCTOBER 4 • The Ann Arbor Symphony ~ Chamber Concert ~ \$10 per person

OCTOBER 11 • The Ann Arbor Civic Theater ~ Readings from Downton Abbey ~ \$5 per person

OCTOBER 18 • Emily and San Slomovits (of Gemini) ~ Violin and Guitar ~ \$5 per person

OCTOBER 25 • Wild Swan Theatre ~ Excerpts from “Once Upon a Time” ~ \$5 per person

NOVEMBER 1 • The Ann Arbor Symphony ~ Chamber Concert ~ \$10 per person

NOVEMBER 8 • University of Michigan School of Music ~ \$5 per person

NOVEMBER 15 • TBA

NOVEMBER 22 • University of Michigan School of Music ~ \$5 per person

NOVEMBER 29 • No Concert (Thanksgiving)

DECEMBER DATES • TBA

Shalom,

This issue of Chai Lights may get to you after we begin the New Year, 5774, but I write this column during the month of Elul, an important time to reflect on the year just passed and to prepare for the year ahead. It is, therefore, quite fitting to offer a few words of thanks and some thoughts about the coming year.



I begin my term as JCC President with tremendous gratitude for the hard work and dedication of our professional and volunteer leadership, without whom none of what we do would be possible. I am honored, and humbled, to follow in the footsteps of immediate past president, Harriet Bakalar. Please join me in thanking Harriet for her leadership and dedication to the JCC and, by extension, to our community at large. Indeed, I have large shoes to fill. To help me in my journey, I have the good fortune to serve the JCC alongside the superb leadership of our professional staff, led by Jeff Baden, and the strong volunteer leadership of our Board of Directors. Together with new Board members Ann Epstein and Evelyn Neuhaus, we begin the year 5774 on solid footing: our fiscal health is good; our programs are numerous and rich; and our staff are creative and passionate about their work.

This fall you will find new program offerings for everyone, from yoga to Krav Maga, bird watching to nature hikes. We will also launch a new Friday Performing Arts Series that will highlight local talent from Ann Arbor Civic Theater and the Ann Arbor Symphony and graduate students from the U-M Department Music, Theatre and Dance. We are also proud to kick off a new partnership in October with Eastern Michigan University (EMU) and the Jewish Federation, with a new Evening Learning Series taught by EMU faculty at the JCC. And for the kids, you will find a host of new enrichment classes, family programs, and even a New Year's Eve overnight.

Quite impressive! Yet we can, and will strive to do even better with your help. Interested in books? We'd love to have you join our Book Festival committee. How about films, camping, senior adult programming, the arts? Whatever your interest, there is a place for you here. I welcome the chance to hear from you and look forward to engaging with you throughout the year.

Shana tova u'metuka; may your New Year be good and sweet.

A handwritten signature in cursive script that reads "Robin S. Axelrod".

Robin Axelrod

table of **CONTENTS**

Community Wide
Events

Pages 4-5

Jewish
Cultural Arts
and Education

Pages 6-10

Early Childhood
Center

Pages 11-13

Youth, Camp and
Teen Programs

Pages 14-15

SPICE Programs

Page 16

Chai Light
Supporters

Page 17

Contributions

Pages 21-22

JCC Board
and Staff

Page 22

Registration Forms

Pages 18-20

Chai Lights

*is a publication of
the Jewish Community Center
of Greater Ann Arbor*

2935 Birch Hollow Drive
Ann Arbor, MI 48108
(734) 971-0990

www.jccannarbor.org

Family Outdoors Education Adventure

Sunday, September 29 • 3 - 5 p.m. • Mary Beth Doyle Nature Area, Pebble Creek Dr.
(across from Stone School Rd. and down the street from the JCC).

The JCC is partnering with the city of Ann Arbor to help keep our local natural area healthy and useable to all.

Learn about:

- Herpetofauna (reptiles / amphibians)
- Constructed wetland, including water quality sampling / testing, etc.

NOTE: Please wear waterproof shoes or boots for this fun adventure.

Cost: \$5 per person, \$15 per household

To register, contact the front desk. For more information contact Noreen De Young, Program Director at noreendeyoung@jccfed.org or (734) 971-0990.



Thursday, October 17th

12:30- 2:00 pm

At the JCC

12:30 Flu and other vaccinations provided by

Rite Aid*

**Rite Aid vaccinations are free with insurance only. Cost is \$22.99 if uninsured.*



Catch up on your
child's
vaccinations!

To RSVP, contact Rachael at 734-971-0990 or rachaelhoffenblum@jccfed.org



Family Square Dance

Saturday October 12, 2013 • 7:30 p.m.

Grab your partner and come on down to an old fashioned square dance. We will have a caller on hand to show you the dances. Enjoy snacks and drinks to wet your whistle and we'll all have some good old fashioned county fun!

Cost: \$5 per person or \$15 per household

To register, contact the front desk.

For more information contact Noreen De Young at noreendeyoung@jccfed.org or (734) 971-0990.

One Candle for Tzedakah

Tuesday, December 3 • 6 - 7:30 p.m. • JCC

Join the community for a unique Hanukkah celebration. Shop for new toys, and donate them instead of exchanging gifts on this one night of Hanukkah. All gifts and toys should be unwrapped, and the JCC will donate them to our local "Toys for Tots." Those unable to attend the event may drop off unwrapped toys at the JCC the week prior to the event.

Enjoy a latke dinner with sufganiot (jelly doughnuts) for dessert followed by a community candle lighting, Hanukkah songfest, children's activities, face painting and more. We will even have special guests from Israel!

Cost: \$5 per person or \$15 per household

To register, contact the front desk. For more information contact Noreen De Young, Program Director at noreendeyoung@jccfed.org or (734) 971-0990.



NOTE: for programs requiring advanced registration, please see form on page 20 or contact the front desk.

Health and Fitness at the JCC

Healthy bodies and lifestyles promote healthy minds and spirits. The JCC serves everyone—people of all ages and physical abilities—in a friendly and approachable environment. JCC health professionals are highly trained and motivated to assist and encourage you in meeting your fitness goals!

CALLANETICS

Tuesdays and Thursdays • 9:30 - 10:30 a.m.

Firms every muscle in your body using stretching exercises synchronized to rhythmical music.

Fee: \$12 Member • \$14 non member

Instructor: Diane Dahl

ISRAELI DANCING

Thursdays

7:30 - 8:30 p.m. - Easy and Oldies

8:30 - 10:00 p.m. - Intermediate and Requests

Learn the latest Israeli dances, line dances, mixers and more! Families are welcome.

Fee: Students & Children Free, All others \$5

Facilitators: Laura and Amnon Steiner

DROP-IN VOLLEYBALL

Mondays • 7 - 9 p.m.

On Mondays, join a drop-in volleyball game to work out, improve your volleyball skills, and make new friends.

Fee: FREE

Facilitator: Carol Rundle

ZUMBA

Sundays, Mondays, Wednesdays and Fridays

9 - 10 a.m.

Tuesdays - 6 - 7 p.m.

Zumba is the exciting new dance craze featuring Latin and international rhythms.

Fee: \$5

Instructor: Karen Silverman

NOTE: for programs requiring advanced registration, please see form on page 20 or contact the front desk

DROP-IN BASKETBALL

10 a.m. - 12 p.m.

Twice monthly, alternating with volleyball.

Dates on website.

Fee: FREE for members, \$5 non-members

DROP-IN VOLLEYBALL

10 a.m. - 12p.m.

Twice monthly, alternating with basketball.

Dates on website.

Fee: FREE!

Facilitator: Carol Lessure

ENERGY EXERCISE

Tuesdays, 11 a.m.

Thursdays, 10 a.m.

Need a mid-morning break?

Come to this popular JCC SPICE program and experience exercise in a supportive environment.

All exercises are low-impact and can be done either sitting or standing.

Fee: \$4 per session, or 3 sessions per month for \$10

Instructor: Maria Farquhar

NEW!

YOGA WITH DOMINIQUE

Wednesdays: Oct 2-Oct 23

(4 week class) • 6-7 p.m.

Dominique Theophilus, an Ann Arbor native, is certified through Jonny Kest Yoga Teacher Training Program. Ms. Theophilus currently teaches stand up paddleboard yoga, as well as vinyasa classes at B Young B Fit Fitness Studio and the YMCA.

Cost: \$25 members, \$40 non-members

To register, contact the JCC front desk. For more information, contact Karen Freedland at (734) 971-0990 or karenfreedland@jccfed.org.

Jewish Cultural Arts & Education

Arts and culture play a unique role in conveying Jewish values and traditions from generation to generation. The benefits and impact on our community are immeasurable. The JCC of Greater Ann Arbor's Jewish Cultural Arts and Education (JCAE) programs offer a wide variety of offerings, including film, music, adult education, lectures, and art. The programs enrich not only our Jewish community but also the community-at-large.



A Night in Vienna with Mozart and Freud

Thursday, October 24 • 7 p.m.

The JCC is pleased to present Julie Jaffee Nagel in a *Gala Evening: From Vienna to London*. The evening will highlight an original conversation (composed by Julie Jaffee Nagel) between Sigmund Freud and Wolfgang Amadeus Mozart. Actors playing Mozart and Freud will act out their disagreements about music as well as other lively topics. Mozart's great Piano Sonata in A Minor will also be performed.

The program will be introduced by Carol Seigel, Director of the Freud Museum in London. She will take us on a verbal and visual tour of the Museum. The Freud Museum, at 20 Maresfield Gardens in Hampstead, was the home of Sigmund Freud and his family when they escaped Nazi annexation of Austria in 1938. It remained the family home until Anna Freud, the youngest daughter, died in 1982. The centerpiece of the museum is Freud's study, preserved just as it was during his lifetime. Undoubtedly the most famous piece of furniture in all the collection is Freud's psychoanalytic couch, on which all of his patients reclined.



The Gala evening will conclude with lavish Viennese desserts and a surprise musical visitor.

Cost: \$20 for members and \$30 non-members. Space is limited. Advance reservations are required.

To register, contact the JCC front desk. For more information, contact Karen Freedland at (734) 971-0990 or karenfreedland@jccfed.org

SAVE THE DATE

**THE 26TH ANNUAL
Jewish Book Festival
November 6-17, 2013**

LOCAL AUTHORS BRUNCH

Sunday, November 17 • 10 a.m.

As part of The Jewish Book Festival, we invite local authors to participate in our Annual Local Authors Brunch. We are looking for Jewish authors and books that are of Jewish content that have been recently published. Submission deadline is September 30.

Please contact Karen Freedland at (734) 971-0990 or karenfreedland@jccfed.org for more information.

NOTE: for programs requiring advanced registration, please see form on page 20 or contact the front desk.



BIRD-WALK IN THE ARB

Sunday, September 15 • 8-10 a.m.

Join local naturalist, birder, and educator Juliet Berger for an informative and fun bird walk in the Nichols Arboretum. We'll meet at the Riverview Court entrance to the Nichols Arboretum at 8 a.m. for coffee and bagels followed by our walk. During the walk, we'll look for returning migratory birds, such as warblers, and enjoy our non-migratory native birds as well. Bring binoculars and leave your cell phone behind!

A Clinical Social Worker by training, Juliet Berger dedicates much of her time to leading bird walks, conducting bird surveys, volunteering for the Audubon Society, and birding throughout Washtenaw County and the Midwest.

Cost: \$10 JCC Member, \$15 Non-Member. Limit 20 persons. Advance reservations are required.

To register, contact the JCC Front Desk. For more information contact Karen Freedland at (734) 971-0990 or karenfreedland@jccfed.org.



JEWISH HIKERS OF MICHIGAN

Sundays, September 22 and October 20 • 1 pm

Hikes are led by Eli Avny and are designed for adults, families and singles to cultivate the love of nature, spirituality, social interaction and physical activities. Bring your back packs, munchies, and water. Hikes will last approximately 1-1/2 to 2 hours and are not physically demanding.

All adults, families, children and singles welcome. Check the JCC website for hike locations

Cost: Free

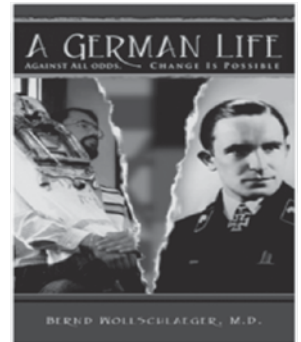
For further information, contact Karen Freedland at (734) 971-0990, or email Eli Avny at jewish.hikers@gmail.com.

A GERMAN LIFE AGAINST ALL ODDS. CHANGE IS POSSIBLE

MEET THE AUTHOR – **DR. BERND WOLLSCHLAEGER**

Sunday, September 29 • 7 p.m.

Dr. Bernd Wollschlaeger will speak on his book “A German Life: Against All Odds Change is Possible,” which describes his struggle growing up in Germany in the shadow of his Father, a highly-decorated WWII tank commander and Nazi officer. He eventually converted to Judaism, emigrated to Israel and served in the Israel Defense Forces as a Medical Officer. In Fall 2013 he will release his novel “Samson’s Shadow” and his book “Stauffenberg: My Live in the Shadow of a Hero.” He also actively participated in the documentary “The Ghosts of the Third Reich” which was aired in the US, Europe, Brazil and China. In addition he is producing a documentary titled “Elias’ Dream: A Man’s Journey Towards Peace” highlighting the issue of Jewish – Arab Coexistence in Israel.



Light refreshments will be served.

Cost: \$8 in advance, \$10 at the door

For further information, contact Karen Freedland at (734) 971-0990, or karenfreedland@jccfed.org.

RUSS COLLINS FILM DISCUSSION GROUP

Mondays: Sept. 30, Oct. 14, Nov. 4, Dec. 9, Jan. 13, Feb. 10, Mar. 10, Apr. 7, May 19 & June 16. 7 -9 p.m.

Each month, join Russell Collins, Executive Director of the Michigan Theater and co-host of WEMU’s Cinema Chat for a lively discussion of movie plots, characters and the unique cinematic elements that send subtle messages to viewers. Films selected will include popular blockbusters, independent films, thought-provoking dramas, intense thrillers, and more. Refreshments will be provided.

Cost: \$90 JCC Members, \$110 Non-Members for a year-long membership in the JCC Film Discussion Group. Space is limited; registration is required by Sept. 20

To register, contact the JCC front desk. For more information, contact Karen Freedland at (734) 971-0990 or karenfreedland@jccfed.org.

STANISLAVSKY'S SYSTEM – DRAMA WORKSHOP

Thursday, Oct. 3, 10, 17 • 7 p.m.

This 3-session workshop concentrates on the concepts and theories of the great Russian director and teacher Konstantin Stanislavsky and his followers. Professor Leonora Ivanitsky will lead the class and introduce some of the over 200 theater exercises developed by Stanislavsky, from her book *In the Realm of the Game*. During the workshop, you will learn and practice a number of theatrical exercises that will enhance memory, concentration, creativity, partnership, teamwork, self-confidence, and self-esteem. No prior acting experience necessary.

Cost: \$45 members, \$60 non-members.

Registration is required by October 5. Register at the Front Desk or for more information, contact Karen Freedland at 971-0990 or karenfreedland@jccfed.org.

COMMANDO KRAV MAGA (CKM) AT THE JCC

**Sundays, October 6, 13, 20,
and 27 • 1-2:15 p.m.**

Commando Krav Maga (CKM) is a reality-based self-defense system utilized by the Israeli Special Forces. Students learn the techniques needed to survive violent or aggressive encounters, including knife defense techniques, gun disarming, getting out of chokes and holds, hand-to-hand defenses, how to survive on the ground, and proper psychology to be used during an aggressive encounter. The primary goal of the class is survival.



Instructor Mike Trester is a level 6 certified Commando Krav Maga instructor with over 23 years of law enforcement experience, including 18 years as a Special Weapons And Tactical team member. He is one of 9 CKM instructors holding a level 6 or higher in the United States.

Cost: \$40 for members, \$50 non-members. Space is limited. Advance registration required.

To register, contact the JCC front desk. For more information, please contact Karen Freedland at (734)971-0990 or karenfreedland@jccfed.org.



MEET THE AUTHOR – SETH GOLDMAN

Thursday, October 10 • 12 p.m.

Seth Goldman is President and TeaEO of Honest Tea, the company he co-founded in 1998 with Professor Barry Nalebuff of the Yale School of Management, which was acquired by The Coca-Cola Company in March 2011. Today, Honest Tea is the nation's top selling ready-to-drink organic bottled tea, and is carried in more than 100,000 outlets. Over the past fifteen years the company has thrived as consumers have shifted toward healthier and more sustainable diets. *Mission in a Bottle, the Story of Honest Tea*, written by Seth and Barry, will be published by Crown Business Books in September, 2013. The book takes a graphic novel approach to detailing the origins of the Honest Tea business. The book trailer describes it as "a guide for building a mission-driven business in a profit-driven world."

This program is co-sponsored by the Jewish Federation of Greater Ann Arbor.

Light refreshments will be served.

Cost: Free. Lunch available for \$6 with advance registration.

For further information, contact Karen Freedland at (734) 971-0990, or karenfreedland@jccfed.org.

NOTE: for programs requiring advanced registration, please see form on page 20 or contact the front desk.

Eastern Michigan University Evening Learning Series



The Eastern Michigan University Judaic Studies Department, the JCC, and the Jewish Federation of Ann Arbor have partnered to bring college level learning opportunities to the JCC. This fall, EMU Professors Jeffrey Bernstein and Andrea Kaston Tange will offer back-to-back classes on Tuesday evenings in October and November. The classes will be taught in an interactive classroom style. While there will be no tests or quizzes, participants can expect weekly reading assignments. Participants are welcome to take one course, but are encouraged to take both courses for an evening of learning! Refreshments will be served between classes, and there will be time for socializing.

Cost: \$100 per course JCC members, \$110 per course non-members
\$180 both courses JCC members, \$200 both courses non-members

“PARADOXES IN JEWISH-AMERICAN POLITICS”

Taught by Professor Jeffrey Bernstein

**Tuesdays, October 15, 22, 29 and November 5
7 - 8:15 p.m.**

Alan Dershowitz has argued that whereas Jews once looked “up” at anti-Semites as those in positions of influence with the power to keep Jews down, Jews now look “down” on anti-Semites as the underclass of society. Simply put, Jews have made it. They exercise great power in American society. Yet, their political behavior retains significant vestiges of their previous lack of power. Why does this group that has “made it” continue to act politically like it has not? We will discuss these and other paradoxes in surveying the American Jewish political experience in areas such as voting behavior, immigration and citizenship, church-state relations, and the relationship between American Jews and Israel.



Jeffrey L. Bernstein is Professor of Political Science at Eastern Michigan University, where he has been on the faculty since 1997. He did his undergraduate work at Washington University and his master’s and doctorate at the University of Michigan. He is co-editor (with Rebecca Nowacek and Michael Smith) and contributing author of *Citizenship Across the Curriculum*, and has written numerous articles and book chapters focusing largely on political science education, and the scholarship of teaching and learning.

“FIGHTING FOR ACCEPTANCE: BRITISH JEWRY IN THE NINETEENTH CENTURY”

Taught by Professor Andrea Kaston Tange

**Tuesdays, October 15, 22, 29 and November 5
8:30 - 9:30 p.m.**

This short course will explore what it meant to be Jewish in Victorian Britain. This was a time of huge population migration and of hot public debate over questions of civil rights for religious minorities, women, and the working classes. Within a culture determined to categorize everyone and everything, and then to construct hierarchies of those categories, Jews struggled not only with whether to assimilate but with how – and how much – to do so. In exploring the hierarchies of race, religion, class, and gender that helped define Jewishness in the period, we will read excerpts of essays, diaries, political speeches, and a novel, all penned by Jewish authors reflecting on their own experiences within this vibrant and rapidly evolving historical moment.



Andrea Kaston Tange is a professor of Victorian literature and culture in the English department at Eastern Michigan University. Her books include studies of Victorian domestic life and of the role of children in building the British Empire. She has taught a course on Nineteenth-Century Jewish Life for the EMU Jewish Studies program and is founding editor of the site 19th Century Jewish Life (<http://19cJewishLife.org>), which aims to bring together links to texts from and historical information about this period.

***To register, contact the JCC front desk. For more information,
contact Karen Freedland at (734) 971-0990 or karenfreedland@jccfed.org.***

THE HERB AND CAROL AMSTER GALLERY

The Amster Gallery is part of the Jewish Community Center of Greater Ann Arbor and is devoted to expanding and enriching cultural life in Ann Arbor by presenting the finest in Jewish artistic expressions, encouraging the preservation of Jewish culture and heritage, and nurturing new creativity in the arts. It is open during the hours of the JCC and is free and open to the public. If you would like to discuss an exhibition of your art, please contact Karen Freedland at karenfreedland@jccfed.org or (734) 971-0990.

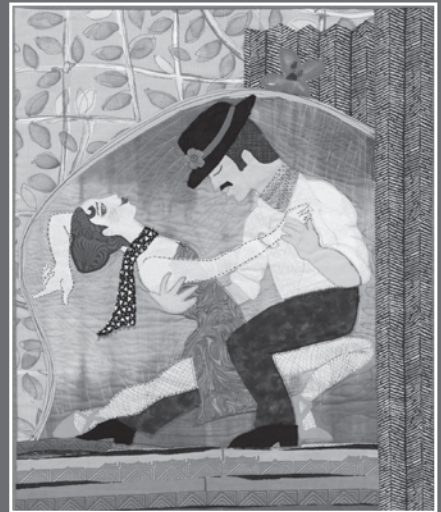
CAROL WINEMAN QUILTING EXHIBIT **September 17 - December 15**

Beginning September 17, the Amster Gallery at the Jewish Community Center of Greater Ann Arbor welcomes quilting artist Carol Sue Wineman. The exhibit title is "Through The Years", which reflects the different styles Carol has produced since she started quilting. Carol's works are personal and dedicated to members of her family. She has displayed her works at the University of Michigan Hospital, the Michigan League and at the Power Center.

Carol believes that quilts have such a wide appeal because knowing and understanding art is not required.

A second show of new decorative pieces called "Art Gifts For Table and Wall." follows "Through

the Years" in November coinciding with the Jewish Book Festival and continues into Hanukkah. Smaller quilts that are placemat size will line the JCC walls, with Hanukkah themes and jewel toned fabrics that also make great gifts. The gallery is open during JCC business hours.



Chaverim B'Shirim 20th Anniversary Concert

Sunday, December 8, 2013, 3 - 5 p.m. at the JCC

Desserts will be served. Concert is FREE. Donations are appreciated.
Are you interested in joining Chaverim B'Shirim?

Contact Marilyn Krimm at mkrimm@umich.edu or 663-1978.

Early Childhood Center



The JCC's Early Childhood Center provides a loving, supportive environment in which a child's creativity and spontaneity are encouraged. We believe that each child is unique and develops at his or her own rate. We provide an environment that is rich in activities filled with time for individual pursuits and led by a warm and nurturing staff. Our program allows a child to develop secure trust in adults, social relationships with other children, a positive self-concept and the foundation for cognitive development.

NOAH'S ARK AT THE TOLEDO ZOO

Sunday, October 6 • 10 a.m. ~ 1 p.m.

Join all of your JCC friends for a visit to the Toledo Zoo! We will meet at the entrance to the zoo, and then participate in an interactive and dramatic re-telling of the story of Noah. We will follow the animals off the Ark as we break into teams for a Biblical scavenger hunt that will take you all over the zoo.

Bring along lunch or pick up some at the zoo and gather with friends old and new for a group picnic after the scavenger hunt.

For more information, or to register for this event, contact Kellie Cohoon in the ECC office at (734) 971-0990 or kcohoon@jccfed.org.



HANUKKAH CELEBRATION AT THE ECC

Tuesday, December 3 • 10:00 a.m. ~ 11:30 p.m.

Parents, grandparents, and special friends are invited to celebrate Hanukkah with the children of the ECC. Each classroom is hosting a unique Hanukkah party, full of fun holiday games, the smell of sufganiyot (jelly doughnuts) and latkes frying, and dreidels spinning.

To RSVP for the Hanukkah party, contact your child's classroom teacher.

NOTE: to register your child for classes, please see form on page 18 or contact the front desk.

Jewish Community Center of Greater Ann Arbor



**Open
to All
Children!**

Look what we have to offer!



 **JEWISH
COMMUNITY CENTER**
OF GREATER ANN ARBOR

www.jccannarbor.org

ECC ENRICHMENT CLASSES • FALL 2013



TOT SHABBAT

On-going • 11 a.m. ~ 12 p.m.

Join us as we create Shabbat memories for you and your child. Every Friday, parents and toddlers come together to celebrate Shabbat at the JCC. We sing songs, make challah, and share exploration time with interesting materials. Tables and chairs are available for families to bring a lunch and eat together.

Ages: All

Fee: Free

JCC Closed: September 6, 20, 27, November 29

LITTLE EXPLORERS

**Tuesdays, September 10-December 3
(12 classes) • 9:00 ~ 10:00 a.m.**

Each class features activity time with music, finger-play with puppets, rhythm instruments, parachutes and group games. While your child develops new skills, you have an opportunity to meet and network with other parents and caregivers to share ideas, advice and concerns

Ages: 6-18 months

Fee: \$70 members or non-members

No Class: November 12

TODDLER TIME

**Tuesdays, September 10 - December 3 (12 classes)
10:00 ~ 11:30 a.m.**

This parent/child interactive program helps you take a new look at the world through new eyes: your toddler's. Together, observe the world in wonder and joy as your child explores the world around himself/herself. Children will play with manipulative and educational toys and engage in arts and crafts, music and rhythm, and supervised activities. A visit to our Monkey room for climbing and crawling will be included in this class.

Ages: 18 months ~ 30 months

Fee: \$70 members or non-members

Instructor: Rachel Newman

No Class: November 12

LET'S DANCE!

**Thursdays, October 3 ~ December 12
(8 classes) • 12:40 ~ 1:25 p.m.**

or

Fridays October 4 ~ December 13 (8 classes)

This fun dance program exposes young children to the basics of natural movement, dance and creative expression. Our professional dance staff from Swing City Dance Studio provides high-quality instruction within the familiar atmosphere of the JCC. Dress for dance class should be loose fitting clothes that promote ease of movement.

Ages: 3 - 5 years

Fee: \$74 childcare, \$96 JCC member, \$120 non-member

No classes: Thursdays, November 7, 14, 28

Fridays, November 8, 15, 29

SPORTS, SPORTS, SPORTS

**Tuesdays, September 10-December 3
(12 classes) • 3:15 ~ 4:00 p.m.**

or

**Fridays, October 4-December 13
(8 classes) • 12:40 ~ 1:25 p.m.**

These Pre-school classes will stress basic skills and rules necessary to play a variety of team sports. Classes are designed to improve hand-eye coordination and teach the importance of teamwork and fair play.

Ages: 3-5 years

Fee: Tuesdays - \$60 childcare, \$80 JCC member, \$95 non-member; Fridays - \$40 childcare, \$60 JCC member, \$72 non-member

Instructor: Kim Braun

No classes: Tuesday, November 12

Fridays, November 8, 15, 29

YOGA KIDS

**Wednesdays, September 11 ~ December 11
(12 classes) • 12:40 ~ 1:25 p.m.**

This class offers pre-school children an introduction to the benefits of yoga. Classes include instruction on balance, breathing, stretching and exercise through imaginative play.

Ages: 3-5 years

Fee: \$60 childcare, \$80 JCC members, \$95 non-members

Instructor: Dominique Theophilus

No classes: November 6, 13

NOTE: to register your child for classes, please see form on page 18 or contact the front desk.

STORY STRETCHERS

Mondays, September 9 ~ December 2
(12 classes) • 12:40 ~ 1:40 p.m.

Story Stretchers is an emergent literature class that also integrates math, science and art activities. Each week the children listen to classic stories and become involved in our activities related to the story.

Ages: 3-5 years

Fee: \$80 childcare, \$100 JCC member, \$120 non-member

Instructor: Rachel Newman

No class: November 11



MUNCHKIN TENNIS

Tuesdays, September 10 ~ December 3
(12 classes) • 12:40 ~ 1:25 p.m.

Tennis anyone? Learn to play tennis, with the emphasis on fun, fitness and skill development. All equipment will be age and development appropriate. Tennis courts in Clinton Park and the JCC gym will be used.

Ages: 3-5 years

Fee: \$60 childcare, \$80 JCC member, \$95 non-member

Instructor: Kim Braun

No class: November 12

GYM AMERICA ON WHEELS AT THE JCC

Mondays, September 9 ~ December 2
(12 classes) • 12:40 ~ 1:25 p.m.

Work on somersaults, handstands, balance, rhythm, jumping and lots of other fun movement activities. Gym America staff will bring in specialized gymnastics equipment, including tumbling mats, balance beams, mini training bar, wedge and octagon shaped fun mats, vaulting stations, and much more – including preschool-sized equipment for young children. Taught by USA Gymnastics nationally certified staff.

Ages: 3-5 years

Fee: \$108 childcare, \$120 JCC members, \$150 non-members

Instructor: Gym America

No class: November 11

MARTIAL ARTS

Tuesdays, September 10 ~ December 3
(12 classes) • 12:40 ~ 1:25 p.m.

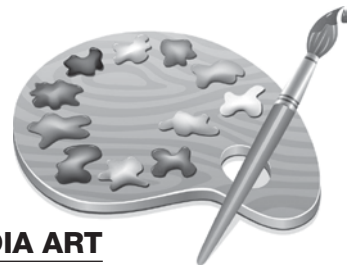
Shalom Gever (Peaceful Warrior) Martial Arts offers a unique youth program that promotes physical exercise and character development. Practicing Martial Arts helps to increase self-awareness, self-confidence, and, respect for others. Drawing on wisdom from both the East and West, children learn in a compassionate, supportive environment that empowers them to grow and mature. Children will learn as well how to deal safely with difficult situations they may encounter in school and daily life.

Ages: 3-5 years

Fee: \$120 childcare, \$140 JCC members, \$160 non-members

Instructor: Rabbi Peter Gluck

No class: November 12



MIXED MEDIA ART

Wednesdays, September 11 ~ December 11
(12 classes) • 12:40 ~ 1:40 p.m.

Children will have the opportunity to create using paints, papers, wool, string, fabric and much more. Emphasis will be on the experience of using the materials as much as the finished product.

Ages: 3-5 years

Fee: \$75 childcare, \$95 JCC member, \$115 non-member

Instructor: Rachel Newman

No class: November 6, 13

TRADITIONAL OUTDOOR GAMES

Thursdays, October 3 ~ December 12
(8 classes) • 12:40 ~ 1:25 p.m.

Remember games like tag, kick the can, four square, kite flying and many more? All of these games encourage children to play outdoors, while developing coordination of large muscles and spatial relationships. The emphasis is on fair play and FUN!

Ages: 3-5 years

Fee: \$40 childcare \$60 JCC member \$72 non-member

No class: November 7, 14



NOTE: to register your child for classes, please see form on page 18 or contact the front desk.

JCC Youth Programs

YOUTH ENRICHMENT CLASSES • FALL 2013

Afterschool care with a snack before each class is included for all students. A Child Information Record must be on file. Contact Noreen De Young at noreendeyoung@jccfed.org or 971-0990 for more information.

TRADITIONAL OUTDOOR GAMES

Mondays, September 9 ~ December 2
(12 classes) • 4:30 ~ 5:30 p.m.

A variety of old-fashioned games, including spud, kick the can, clean up your backyard, kickball and other favorites will be introduced. This class encourages kids to put down that electronic device, and play outside!

Ages: Grades 2 - 5

Fee: Member Fee - \$60 / Non-Members \$80 / For JCC Members not enrolled in KC on the day of the class, who need childcare for the duration of the class: add \$160 flat fee.

Instructor: Kim Braun

YOGA KIDS

Tuesdays, September 10 ~ December 3
(12 classes) • 4:30 ~ 5:30 p.m.

This class offers children an introduction to the benefits of yoga. Classes include instruction on balance, breathing, stretching and exercise through imaginative play.

Ages: Grades K - 2

Fee: Member Fee - \$72/\$90 Non-Members / For JCC Members not enrolled in KC on the day of the class, who need childcare for the duration of the class: add \$160 flat fee

No Class: October 12

MARTIAL ARTS

Tuesdays, September 10 - December 3
(12 classes) • 4:30 ~ 5:30 p.m.

Shalom Gever (Peaceful Warrior) Martial Arts offers a unique youth program that promotes physical exercise and character development. Practicing Martial Arts helps to increase self-awareness, self-confidence, and, respect for others. Drawing on wisdom from both the East and West, children learn in a compassionate, supportive environment that empowers them to grow and mature. Children will learn as well how to deal safely with difficult situations they may encounter in school and daily life.

The school has three levels of instruction: basic, intermediate and advanced. Elementary age students are taught at the basic level. If interested, students may use their class hours to promote through belt ranks at the basic level. While Shalom Gever welcomes students from

all backgrounds, we actively honor and respect the values rooted in Judaism.

Ages: Grades K - 5

Fee: Member Fee: \$120 / \$140 Non-Members / For JCC Members not enrolled in KC on the day of the class, who need childcare for the duration of the class: add \$160 flat fee

Instructor: Rabbi Peter Gluck, Rabbi, MSW

No Class: November 12

FLAG FOOTBALL/VOLLEYBALL

Wednesday September 11 ~ December 4
(12 classes) • 4:30 ~ 5:30 p.m.

This class will teach the fundamentals of football including punting, passing, and football strategy. The volleyball portion will emphasize serving, bumping, and teamwork. A game will be played weekly.

Ages: Grades 2 - 5

Fee: Member Fee - \$60 / \$80 Non-Members / For JCC Members not enrolled in KC on the day of the class, who need childcare for the duration of the class: add \$160 flat fee

No Class: November 27

HIP HOP DANCE

Thursdays, October 3~ December 12
(10 classes) • 4:30 ~ 5:30 p.m.

Welcome to Hip-Hop with Julius! Your child will learn an exciting way to exercise their body through a fun, robotic style of movement. This dance class is for all levels and offers an opportunity for your child to increase their self-confidence, coordination, and flexibility. It will also allow an outlet for children to express themselves through creative and unique movements.

Ages: Grades 2 - 5

Fee: Member Fee - \$50 KC enrollees / \$65 Non-Members / For JCC Members not enrolled in KC on the day of the class, who need childcare for the duration of the class: add \$135 flat fee

Instructor: Julius Theophilus (Pioneer High School Future Stars 2009 Winner)



NOTE: to register your child for classes, please see form on page 18 or contact the front desk.



New Year's Eve Overnight

Tuesday, December 31 • 7:30 p.m.

For Kdgt.-8th graders

JCC members and their friends don't need to find a sitter on New Year's Eve! Kids will enjoy activities, snacks, late night movies and their own New Year's party. Children should bring a sleeping bag, pillow, pajamas and a toothbrush. Breakfast will be provided the next morning. Children must be picked up by 9 a.m. Spaces are limited, so sign up early.

Cost: \$25 JCC members, \$35 Non-members

To register, contact the front desk. For more information contact Noreen De Young, Program Director at noreendeyoung@jccfed.org or (734) 971-0990.



SAVE the DATE

..... **FAMILY**
JCC ICE SKATING DAY



December 26

Time and location TBA.



NOTE: for programs requiring advanced registration, please see form on page 20 of Chai Lights

Learn More about the 2014 Israel Student Exchange Program

Sunday, October 13 • 3:30 p.m. • JCC

Ninth grade teens and their parents are invited to an informational meeting at the JCC to learn about the upcoming Jewish Federation Student Exchange visit to Moshav Nahalal, Israel. The trip will take place February 13-23, 2014.

Teens from Ann Arbor will be hosted by families in Nahalal during the February trip. The trip will include touring Nahalal and the surrounding region, experiencing the Nahalal Regional High School, interacting with local teens, and visiting Jerusalem and Tel Aviv.

In October 2014, during the Sukkot holiday, exchange participants from Ann Arbor will host their peers from Nahalal.

The Student Exchange is funded by the Federation's Partnership2Gether Community-to-Community allocation.



tion. The only expense is the cost of the flight, trip insurance, and pocket money. Thanks to a generous grant from the Max M. and Marjorie S. Fisher Foundation, some funds are available to assist families for whom the full cost is prohibitive.

For more information and the registration form, visit at www.jewishannarbor.org. You may also contact Rabbi Ilana Baden at 734-677-0100 or ilana@jewishannarbor.org.

Add Some SPICE* to your Life!

**Social, Physical, Intellectual, Cultural and Educational Programs for Older Adults*

The JCC's older adult program, SPICE offers a warm environment where adults come to learn, socialize, and have fun! All events are FREE unless noted otherwise.

Visit the JCC to see our latest newsletter, SPICE It Up! for information about current programming.

TUESDAYS at the JCC

ENERGY EXERCISE© WITH MARIA FARQUHAR

11:00 a.m.

(\$4 per session or 3 sessions per month for \$10)

Need a mid-morning break? Come to the JCC and experience exercise in a supportive environment. All exercises are low-impact and can be done either sitting or standing. We look forward to seeing you there!

HOMEMADE DAIRY LUNCH BUFFET

Noon

(\$3 per person)

Come enjoy a dairy lunch prepared at the JCC. Sit down, relax, and meet other SPICE members.

GAMES AND ACTIVITIES

1:00 p.m.

Join us for a variety of games and activities including mahjong and quilting. Join our quilters to make baby quilts for the children at Mott Hospital.

Special Events

Celebrate your birthday with SPICE! Every month on the first Thursday SPICE has a birthday celebration. Community members with birthdays in that month receive a special flyer and birthday coupon good for a free lunch for them and a guest. Come for the cake and ice cream, stay for the afternoon programming!

Do you worry about your blood pressure? The nurses from CARE Response visit the SPICE program on the second Thursday of each month to provide FREE blood pressure screenings and information on staying healthy. No RSVP required.

THURSDAYS at the JCC

ENERGY EXERCISE© WITH MARIA FARQUHAR

10:00 a.m.

(\$4 per session or 3 sessions per month for \$10)

Need a mid-morning break? Come to the JCC and experience exercise in a supportive environment. All exercises are low-impact and can be done either sitting or standing. We look forward to seeing you there!

CURRENT EVENTS WITH HEATHER DOMBEY

11:00 a.m.

Have you seen any interesting stories in the newspaper lately? Bring them in to discuss with Heather during current events! Discuss issues important to you, or come to learn more about what's going on. We hope you'll find current events both enjoyable and informational!

HOMEMADE DAIRY LUNCH BUFFET

Noon

(\$3 per person)

Come enjoy a dairy lunch prepared at the JCC. Sit down, relax, and meet other SPICE members.

AFTERNOON PROGRAMMING

1:00 p.m.

(See the SPICE newsletter for more information)

Each week, SPICE welcomes community members and local organizations to give presentations. These presentations vary in topic and keep SPICE members entertained, informed, and armed with the knowledge they need to age in place. Past speakers have included The Michigan Senior Brigade, The Ann Arbor Dinnerware Museum, Ann Arbor Transit Authority, Avalon Housing, and Huron Valley Hospital, among others!

For more information about SPICE, contact Rachael at 734-971-0990 or rachaelhoffenblum@jccfed.org

Supporters of *Chai Lights*!

Sponsoring *Chai Lights* can help you reach 3,000 households in Washtenaw County. The sponsorship is \$67 per issue or \$185 for three issues in advance. **For more information, please contact Halye Aisner at halyeaisner@jccfed.org or 971-0990.**



**Suburban Chevrolet Cadillac
Suburban Saab**

Dan Schulte
Sales and Leasing Consultant

Direct 734.327.1716
3515 Jackson Rd
Ann Arbor, MI 48103
734.663.3321, fax 734.663.7621
dschulte@suburbancollection.com

שלום

make the choice



Simply Scrumptious
Personalized Catering for All Occasions

Lori Shepard - Executive Chef 734-646-4586

Gregory Fox Photography

734/677-6862
gfox @ igc.org
www.gfoxphoto.com
3302 Williamsburg
Ann Arbor, MI
48108





Four Points®
Sheraton

cheryl.daniel@fourpointsannarbor.com

Heather Jones
Director of Catering
Tel: (734) 996-0600
Direct: (734) 929-3401



Justin Gamble
Owner • Licensed Builder
734-341-5753

www.jrgconstructionservices.com
justin@jrgconstructionservices.com



MICHAEL SWEENEY & COMPANY

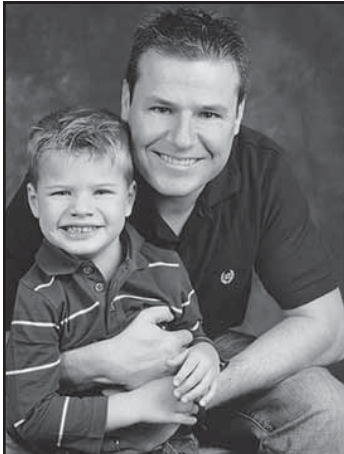
BATHROOM REMODELING

- WHIRLPools • TUBS • SHOWERS •
- BASEMENT & HANDICAP BATHS •
- CERAMIC TILE •

Quality work since 1980
BATHROOMS ARE OUR BUSINESS
LICENSED & INSURED

668-4762

sweeneyco@comcast.net
Ann Arbor, MI



Carine Lutz
Photography

Portraits ~ Fine Arts
734.677.3130
creatingartisticmemories.com

In Touch
Therapeutic Massage

*Many spa offerings available
to help you relax and unwind!*

361 W. EISENHOWER PKWY. • ANN ARBOR, MI • 48103
(734) 994-7822 • WWW.INTOUCHTM.COM

- 8 massage rooms
- two steam rooms
- sauna
- body wraps
- facials and peels



ECC AND YOUTH ENRICHMENT CLASSES FORM - FALL 2013

One form per child - additional forms can be found at (web link)

You can register by mail or in person at the JCC. All registration forms must include payment in full. Please make checks payable to the Jewish Community Center. We cannot accept registration over the phone. Use one form per person. JCC membership entitles you to reduced class fees. **Some classes have reduced rates for children enrolled in Child Care on day and time of class.**

Child's Name _____ Birthdate _____ Grade _____ Age _____

Phone _____ Street _____ City _____ Zip _____

Parent Name _____ Phone (w) _____

Parent Name _____ Phone (w) _____

Whom shall we call in an emergency if we cannot reach either parent?

Name _____ Phone _____

Please enter all information below. Make sure you are entering the correct fee listed with each class.

CC=Child Care Participant M=Member N/M=Non-Member CC M N/M

EARLY CHILDHOOD CLASS

	Day	Time	Status	Fee
<input type="checkbox"/> Tot Shabbat _____				
<input type="checkbox"/> Little Explorers _____				
<input type="checkbox"/> Toddler Time _____				
<input type="checkbox"/> Let's Dance! _____				
<input type="checkbox"/> Sports, Sports, Sports _____				
<input type="checkbox"/> Yoga Kids _____				
<input type="checkbox"/> Story Stretchers _____				
<input type="checkbox"/> Munchkin Tennis _____				
<input type="checkbox"/> Gym America on Wheels _____				
<input type="checkbox"/> Martial Arts _____				
<input type="checkbox"/> Mixed Media Art _____				
<input type="checkbox"/> Traditional Outdoor Games _____				

Please remit cash or check payable to the JCC, 2935 Birch Hollow Dr., Ann Arbor, MI 48108. **TOTAL ENCLOSED: \$** _____

YOUTH ENRICHMENT CLASS

☐ Traditional Outdoor Games (\$____) ☐ Yoga Kids (\$____) ☐ Martial Arts (\$____) ☐ Flag Football/Volleyball (\$____) ☐ Hip Hop Dance (\$____)

I understand that the JCC's programs may involve some risks and will not hold the JCC, its instructors, employees, or associates responsible or liable for any accidents that occur. I authorize the JCC to secure medical and/or emergency surgical treatment for my child(ren) if needed. I give permission for still or video photographs of my child(ren) to be taken by the JCC staff and used in online and print marketing materials.

Parent Signature _____ Date _____ **TOTAL ENCLOSED: \$** _____

FEE STRUCTURE: KC price is for children already enrolled in childcare on the afternoon of the class. **Non-member price** is for children of non-member who are just attending the class accompanied by an adult. **Class and Childcare price** is for children coming directly from school, who are not enrolled in Kids' Club on the day of the class. The fee is a combination of the class fee plus \$15 per day to cover childcare. Class participants join our Kids' Club participants for afterschool snack and an hour of supervised care. Our staff will escort class participants to and from the enrichment class. JCC Staff will bring participants back to the Maas lounge at the conclusion of class, or parents may pick their children up directly from the class at 5:30 p.m. Children must be picked up from the Maas Lounge by 6 p.m., or a late fee will be assessed.

Method of Payment (please select): ☐ cash ☐ check ☐ credit (\$10 minimum)

Cardholder name: _____

Card type (please select) ☐ VISA ☐ Mastercard Card Number: _____

Expiration Date: _____ 3 digit Security Code: _____ Billing Zip Code: _____

Total Amount Enclosed or charged to your card: \$ _____

Signature: _____ Date: _____



Little Bands

Wednesdays, September 11 ~ December 4

Take this opportunity to join a band! The instrumentation is piano, guitar, bass, drums and voice, like a rock band or a jazz band. Children will follow a detailed curriculum of songs, and each band member learns to play every song on every instrument. After just one class, children will be playing songs and having a great time.

Tuesday: September 17 ~ December 17

2:30 - 3:10: Pre-school Band (ages 4&5)
3:20 - 3:55: 3 yr old Band
4:10 - 5:00: Kindergarten Band
5:00 - 5:55: Grades 5 - 8
(choose and write your own songs)
6:00 - 6:55: Family Band
(families can all learn together)

Wednesday: September 18 ~ December 18

3:15 - 4:00: Pre-School Band (ages 4 & 5)
4:10 - 5:00: Grades 1&2 Band
5:00 - 5:55: Grades 3&4 Band

No Bands: Nov 5 & 6 and Dec 3 & 4.

Performances Dec 17 and 18 at 6:00

Little Bands Fall 2013 Registration Form

Name _____ Age _____ School _____

GRADE _____ PARENT'S NAMES _____

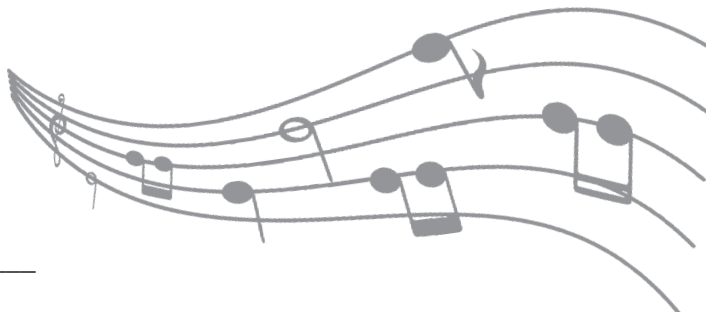
EMAILS _____

Phone (home) _____ (cell) _____ (other) _____

COSTS:

Family Band: \$269 per child
3 yr old band: \$215
All other Bands: \$299
Private Lessons: \$23 per 1/2 hr lesson
Book & CD (required): \$15

AMOUNT ENCLOSED \$ _____



Please make all checks payable to Little Bands LLC!

Mail checks & registration forms to 3212 Tiger Lily Dr Ann Arbor, MI 48103

JCC of Greater Ann Arbor Family Programs and JCAE Registration Form

Name _____ Phone _____

Email _____ Address _____

City _____ State _____ Zip _____

FAMILY PROGRAMS

Program name	Date(s)	Participant's Name(s)	Age/Grade(s) (If applicable)	Fee
Family Outdoors Education Adventure	Sun. 9/29			
Family Square Dance	Sat. 10/12			
One Candle for Tzedakah	Tues. 12/3			
Ice Skating Event	Thurs. 12/26			
New Year's Eve Overnight	Tues. 12/31			

JCAE (Jewish Cultural Arts and Education)

Program name	Date(s)	Participant's Name(s)	Age/Grade(s) (If applicable)	Fee
Bird-Walk in the Arb	Sun. 9/15			
Meet the Author – Dr. Bernd Wollschlaeger	Sun. 9/29			
Russ Collins Film Discussion Group	Mon. 9/30- 6/16/14			
Yoga with Dominique	Wed. 10/2- 10/23			
Stanislavsky's System – Drama Workshop	Thurs. 10/3- 10/17			
Commando Krav Maga	Sun. 10/6- 10/27			
Meet the Author – Seth Goldman	Thurs. 10/10			
Paradoxes in Jewish American Politics	Tues. 10/15- 11/5			
Fighting for Acceptance: British Jewry in the 19th Cen.	Tues. 10/15- 11/5			
A Night in Vienna with Mozart and Freud	Thurs. 10/24			

Method of Payment (please select): ☐ cash ☐ check ☐ credit (\$10 minimum)

Cardholder name: _____

Card type (please select) ☐ VISA ☐ Mastercard Card Number: _____

Expiration Date: _____ 3 digit Security Code: _____ Billing Zip Code: _____

Total Amount Enclosed or charged to your card: \$ _____

Signature: _____ Date: _____

Honor the memory of a friend or loved one, congratulate or let someone know you are thinking of them with a donation to one of the JCC's designated funds.

Current Use Funds

- | | | | |
|------------------------|--------------------------|-----------|--------------|
| • Jewish Book Festival | • Early Childhood Center | • Maccabi | • Youth |
| • General Fund | • Camp Raanana | • Seniors | • Technology |

**Endowments – JCC Endowments are part of
the Jewish Community Foundation of Greater Ann Arbor**

- | | |
|--|---|
| • Early Childhood Center Teacher Appreciation –
Herman Zerweck Fund | • Cultural Arts – Bobbie and Myron z”l Levine
Cultural Arts Fund |
| • Early Childhood Center Teacher Appreciation –
Evelyn Moreida Krislov Fund | • Musical Arts – Marilyn and Sam Krimm
Musical Arts Fund |
| • Early Childhood Center Infant/Toddler Play-
ground Endowment Fund | • Senior Program – Sybil Fishman and Pauline DePietro Fund |
| • Jewish Book Festival – Fred and Ned Shure
Book Festival Fund | • Senior Program – Phyllis Herzig Fund |
| • Film Festival – Ann and Jules Doneson
Film Festival Fund | • Fund for the Future in Honor of Chuck and Sharon Newman |
| | • JCC/Federation Executive Directors’ Discretionary Fund in
honor of Nancy N. Margolis |

For more information, please contact the JCC at 734-971-0990.

JCC Contributions

Senior Fund

*In memory of Sheldon Ellis, husband of
Ethel and father of Charles*

From Heather and Stuart Dombey

General Fund

Carol Amster
Harlene and Henry Appelman
Anna Darsky
Victor Lieberman
Laurine Parmely
Israel Saginaw
Alice Train’
Israel Woronoff

*In honor of Robert Davidson, father of
Ed Davidson*

From Esther Ullman & Morley Witus

*In honor of the birthdays of Naomi
Harrison, Rebecca Gottlieb and Regina
Gottlieb Thompson*

From Carole and Mitchell Rycus
*In memory of Walter Segaloff, father of
David Segaloff*

From the Board and Staff of the JCC

*In memory of Janet Kravitz, mother of
Susan K. Ayer*

From the Board and Staff of the JCC

*In honor of the birth of Maya Leia,
daughter of Rabbi Kim Blumenthal and
Ira Horowitz and little sister of Andrew*

From the Board and Staff of the JCC

Early Childhood Center

Barbara and Leslie Bank
Jayne Harary
Sandra and Lenn Harrison
Adele and Hank Kaplan
Randy Williamson

Fund for the Future

*In honor of Sharon Newman’s 70th
birthday.*

From Joni and Melvin Muskovitz

*In honor of Sharon Newman’s special
birthday.*

From Ruth and Michael Brooks

*In memory of Rebekah Lines,
grandmother of Rebekah Gamble.*

From Laura and Peretz Hirshbein

Grover 50th Birthday

Lobby Upgrade

Irene and Paul Adler
Rachel, David & Zoe Adler
Barb and Bernie Banet
Laurie and Jeff Barnett
Leslie and Norman Bash
Reva Bornstein
Ruth and Michael Brooks
Kearstin Brown-Warren & Gareth Warren
Irene and Charles Butter
Alice Cohen
Judy and Malcolm Cohen
Noreen and Ray De Young
Alyssa and Allan Daskal
Annette Fisch
Susan Fisher & John Waidley
Joyce and Steve Gerber
Beverly Gershowitz
Phyllis and David Herzig
Julie and Scott Hershovitz
Bernice Hollander
Frederick Horowitz
Rachel Juni
Leah and Paul Kileny
Lily Ladin

Judie and Jerry Lax
Elaine and Barry Margolis
Nancy and Phil Margolis
Bob Milstein
Rachel Newman & Yossi Zekic
Sharon and Chuck Newman
Sherri Newpol
Susan Ressler
Judith Rose
Prue and Ami Rosenthal
Carole and Mitch Rycus
Greg Saltzman
Mara and Paul Sax
Mary and Art Schuman
Susan Sefansky
Shapo Family
Jennifer Siegel
Pat and Errol Soskolne
Cara Spindler & Dave Nelson
Lonnie and Ron Sussman
Fran Weinstein
Sarah and Nicholas Zagar
Natan, Oren and Esther Zekic

Jewish Film Festival

Patti Aaron
Sallie Abelson
Dorit Adler
Sue and Larry Adler
Carol Amster
Barbara Appelman
Harlene and Henry Appelman
Arbor-Ypsi Foot & Ankle Center
Levana and Stephen Aronson
Eli Avny

Contributions continued on page 22

Brad and Robin Axelrod
 Lillian and John Back
 Harriet Bakalar & Edwin Tobes
 Barb and Bernie Banet
 Laurie and Jeffrey Barnett
 Leslie and Norman Bash
 Linda and Ronald Benson
 Beth Israel Congregation
 Joan Binkow
 Bloom General Contracting
 Café Zola
 Susan and Oliver Cameron
 Joanne Canvasser
 Mimi Chapman
 Sheri and Michael Clark
 Judy and Malcolm Cohen
 Kathi and Rick Cohen
 Marian Cohen & Sheldon Ginns
 Susan and Arnold Coran
 Judi and Ed Davidson
 Heather and Stuart Dombey
 Judith Elkin
 Judith and Todd Endelman
 Cynthia and Irving Feller
 Eileen and Gary Freed
 Janet and Charles Garvin
 Rita and Charles Gelman
 Elliot H. Gertel
 Maureen and David Ginsburg
 Mona and Ed Goldman
 Anita and Albert Goldstein
 Nancy and Steven Goldstein
 Judy and Alfred Gourdji
 Laurie and Jayson Greenberg
 Susan and Barry Gross
 Alice and Clifford Hart

Phyllis and David Herzog
 Carolyn and Larry Hiss
 Frederick Horowitz
 Innovations Décor & Design-Ruth Petit
 Jewish Cultural Society
 Jewish Federation
 of Greater Ann Arbor
 Lis and Hugo Kahn
 Leah and Paul Kileny
 Liz Kirshner
 Shira and Steven Klein
 La Marsa
 Sarah Lampert
 Pamela and Stephen Landau
 Judie and Jerry Lax
 Laurie and Jeffrey Leflein
 Michael and Patricia Levine
 Carolyn and Paul Lichter
 Joan Lowenstein & Jonathan Trobe
 Carmen Ludy
 Mani Osteria and Bar
 Elaine and Barry Margolis
 Nancy and Philip Margolis
 Mercy's Restaurant
 Lauren and Eric Metzendorf
 Myrna and Newell Miller
 Lisa Molnar
 Virginia Morgan & Joseph Spiegel
 Gayle and Bruce Moyer
 Hillary Murt & Bruce Friedman
 Sharon and Charles Newman
 Arthur Nusbaum
 Marylen Oberman
 Susan and Mark Orringer
 Natalie and Roger Palay
 Penchansky Whisler Architects

Sheila and Owen Perlman
 Susan and Murray Rebner
 Michelle and Arthur Riba
 Prue and Ami Rosenthal
 Swanna and Alan Saltiel
 Lisa and Howard Saulles
 Margot and Brian Schapiro
 Mary and Arthur Schuman
 Ronnie Shapiro
 Pat and Errol Soskolne
 Greta Spier & Jonathan Rubin
 Gale and Martin Stolzenberg
 Karen and David Stutz
 Roberta and Larry Tankanow
 Mindy and Daniel Teitelbaum
 Temple Beth Emeth
 Lisa and Jeffrey Tulin-Silver
 UM Dearborn Holocaust Center
 Esther Ullman & Morley Witus
 Elise Weisbach
 Zelma Weisfeld
 Lisa and Stephen Weiss

Maccabi Fund

Sophie Fierro-Share & Daniel Share
 Celina and Eduardo Kleer
 Gayle Rosen & Andrew Sugerman
 Tamar Springer & Steve Stancroff
 Elizabeth Wierba & David Schmidt
In honor of Rabbi Bob Levy
 From Eve Silberman & John Hilton

United Way Designated Donation

Dr. Betsy Lozoff

Special Thank You to Carol Finerman for her ongoing support of our Book Festival.

JCC Board of Directors and Staff

JCC Board of Directors

President

Robin Axelrod

Vice President

Prudence Rosenthal

Secretary

Bernard Banet

Treasurer

Eric Metzendorf

Directors

Harriet Bakalar
 Edward Davidson
 Judith Elkin
 Ann Epstein
 Melissa Greenhawt
 Elaine Margolis
 Bruce Moyer
 Evelyn Neuhaus
 Rachel Newman
 Seth Penchansky
 Sheila Perlman
 Eve Primus
 Eric Rosenberg
 Clara Silver
 Pat Soskolne
 Laura Steiner
 Roberta Tankanow
 Esther Ullman
 Elise Weisbach
 Lisa Weiss

Honorary Directors

Rabbi Kim Blumenthal
 Rabbi Lisa Delson
 Rabbi Robert Dobrusin
 Madricha Julie Gales
 Rabbi Roderic Glogower
 Rabbi Aharon Y. Goldstein
 Rabbi Robert D. Levy
 Rabbi Michal Woll

Past Presidents

Harriet Bakalar
 Malcolm S. Cohen
 Jesse Gordon
 Elaine Margolis
 Lisa Molnar
 Charles Newman
 Seth Penchansky
 Haran Rashes
 Dr. David Segaloff
 Laurence N. Smith
 Eva Solomon
 Pat Soskolne
 Ira Strumwasser

Honorary Board

Herbert Amster z"l
 Michael Levine
 Nancy Margolis
 Sharon Newman
 Carol Smokler
 Irv Smokler

JCC Staff

Executive Director

Jeffrey Baden

Finance Director

Lori Kahn

Marketing Director

Halye Aisner

Jewish Cultural Arts &

Education Director

Karen Freedland

Operations Manager

Rebekah Gamble

Program Director

Noreen De Young

Youth and Camp Director

Ethan Krasnow

Early Childhood Director

Peretz Hirshbein

Facilities and Maintenance Director

Ken Emerson

Older Adults Program Coordinator

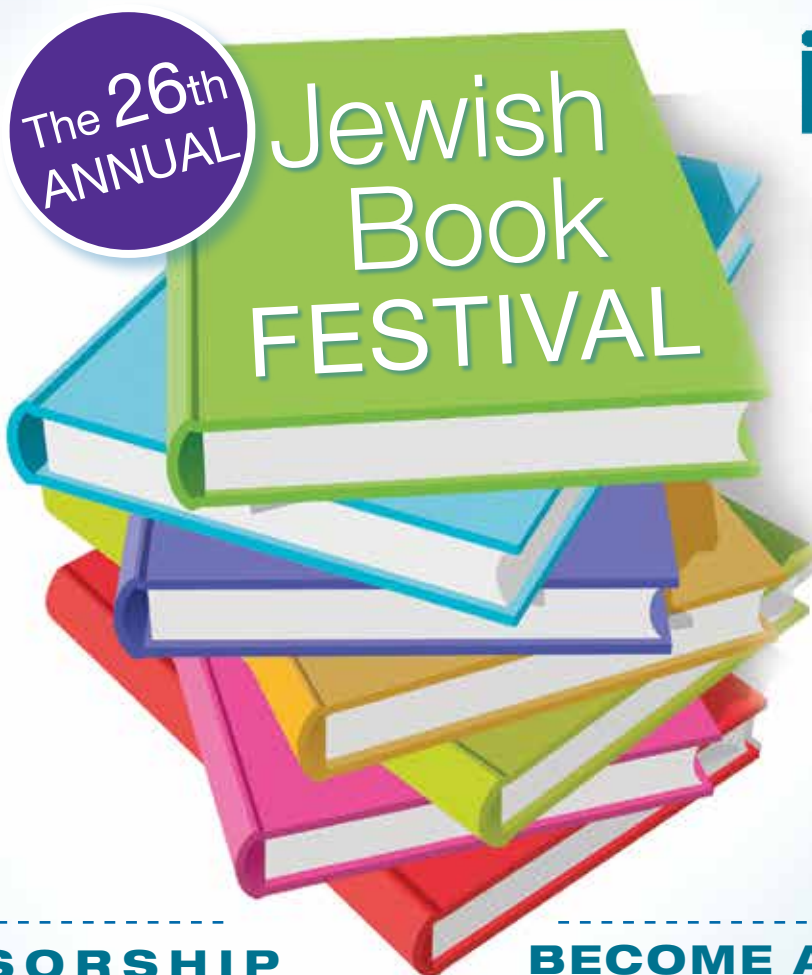
Rachael Hoffenblum

Older Adults Program Assistant

Heather Dombey

Security

Grover Thompson



November
6-17, 2013

SPONSORSHIP Opportunities and Benefits

Please check one:

☐ **Publisher \$1,000**

- Sole Sponsorship of one author event
- 4 tickets to sponsor reception
- Recognition in festival publications
- 4 tickets to Lunch with the Author

☐ **People of the Book \$500**

- Sole Sponsorship of one author event
- 2 tickets to sponsor reception
- Recognition in festival publications
- 2 tickets to Lunch with the Author

☐ **Book Lover \$360**

- Shared Sponsorship of one author event
- 2 tickets to sponsor reception
- Recognition in festival publications
- 2 tickets to Lunch with the Author

☐ **Avid Reader \$180**

- 1 ticket to sponsor reception
- Recognition in festival publications
- 1 ticket to Lunch with the Author

☐ **Other \$** _____

Sponsorships of any demonination are greatly appreciated.

BECOME A SPONSOR!

Name

Phone

Email

Address

City State Zip

Payment Method

☐ Check Enclosed (*preferred method of payment*) ☐ Visa ☐ Mastercard

Card#

Exp. Date

Security Code (*On Back Of Card*)

Signature

Contributions are tax-deductible to the extent permitted by law. Each sponsor will receive a statement specifying his/her tax-deductible contribution. Please send checks payable to the Jewish Community Center, 2935 Birch Hollow Drive, Ann Arbor, MI 48108

Questions? Please contact Karen Freedland at karenfreedland@jccfed.org or (734) 971-0990, or visit us online at www.jccannarbor.org.

JCC UPCOMING EVENTS

SEPT. 15	Family Bird Walk in the Arb. • 8 a.m.
SEPT. 22	Family Harvest Festival • 2 p.m.
SEPT. 29	Family Outdoor Education Adventure • 3-5 p.m.
SEPT. 30	Russ Collins Film Discussion Group • 7 p.m.
OCT. 2, 9, 16, 23	Yoga with Dominique • 6-7 p.m.
OCT. 4	Ann Arbor Symphony Chamber Concert • 1 p.m.
OCT. 3, 10, 17	Stanislavsky System Drama Workshop • 7 p.m.
OCT. 6, 13, 20, 27	Krav Maga Self-Defense Workshop • 1-2:15 p.m.
OCT. 6	ECC Noah Trip to Toledo Zoo • 10 a.m. - 1 p.m.
OCT. 11	Ann Arbor Civic Theatre - Readings from "Downton Abbey" • 1 p.m.
OCT. 12	Family Square Dance • 7:30 p.m.
OCT. 13	Israel Student Exchange Program • 3:30 p.m.
OCT. 14	Russ Collins Film Discussion • 7 p.m.
OCT. 15, 22, 29, NOV. 5	EMU Evening Learning Series • 7 p.m.- 9:30 p.m.
OCT. 18	Emily and Sam Slamovits Concert • 1 p.m.
OCT. 20	Jewish Hikers of Michigan • 1 p.m.
OCT. 24	A Night in Vienna with Mozart and Freud • 7 p.m.
OCT. 25	Wild Swan Theatre - Excerpts from "Once Upon a Time" • 1 p.m.
NOV. 1	Ann Arbor Symphony Chamber Concert • 1 p.m.
NOV. 6-17	Jewish Book Festival
NOV. 8	U of M School of Music Concert • 1 p.m.
NOV. 17	Local Artists Brunch • 10 a.m.
NOV. 22	U of M School of Music Concert • 1 p.m.
DEC. 3	One Candle for Tzedakah Hanukkah Celebration • 6-7:30 p.m.
DEC. 8	Chaverim B'Shirim 20th Anniversary Concert • 3-5 p.m.
DEC. 26	JCC Ice Skating Day
DEC. 31	New Year's Eve Overnight • 7:30 p.m.